

O.L.A.E. Newsletter

Volume No. 01

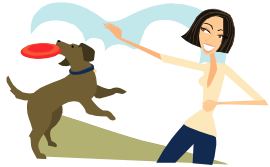
Issue No. 03

Date: Summer 2006

Published Quarterly

ABOUT US

O.L.A.E. (Off-Leash Area - Edmonds) became a non-profit organization in August 2005, in order to fulfill our mission to steward, maintain, and operate the off-leash dog area in Edmonds. In March 2006, the IRS granted O.L.A.E. its 501(c)3 status which means all contributions are tax deductible. Please visit www.olae.org for additional information.



“DOG DAYS OF SUMMER”

On **July 29, 2006**, from **10:00 am to 3:00 pm** O.L.A.E. will host the “Dog Days of Summer”. All dogs are invited to participate in a fun and festive summer day at the beach. Dr. G will “micro-chip” dogs for a fee of \$25 and the first 35 dog owners will get a \$10 manufactures rebate. There will be raffles and dog friendly booths. Vendors thinking of participating might consider that last year on a Saturday in July, we had an unofficial count of over 500 folks with their dogs. Contact Diane@olae.org for details.

CLEAN -UP DAY

On Sunday, May 7th volunteers arrived early at the park to cut the grass, clean-up, and spread some Corn Gluten Meal (CMG) that is to help control weeds and foxtails. CMG is actually a feed for commercial livestock, but a study performed by the University of Iowa revealed that CMG is a safe and viable weed and feed product for turf grass areas.

Four hundred pounds of CMG was donated by Mr. Ted Skinner of the Wilbur-Ellis Company in Portland, Oregon. Wilbur-Ellis is committed to providing the nursery and greenhouse industry of the Pacific Northwest with the widest range of materials available. For a location of a branch near you visit <http://www.wilbur-ellisfeed.com>. Thanks Ted!

SMOKING OUTSIDE?

Here is our interpretation of Initiative 901: Smoking is allowed outside; however, if there is a city employee in the near vicinity, you may not smoke within 25 feet of that individual.

NEW GARBAGE CONTAINER

A new garbage container was added to help control the main garbage area. Please make sure the garbage goes into the garbage cans and not between the cans and container. Plastic produce bags now replace the garbage dispensers at the satellite sites. It was costing \$.06 per bag for use in the dispensers and we were using approximately 1000 every two weeks. The new bags cost us about \$0.01 and volunteers are negotiating with local grocery stores to see if we can get that cost reduced.

SEATTLE IS BOTTOM OF PILE FOR PICKING UP POOP

Shockingly, Seattle dog owners are considered more negligent than those dog owners from other major cities! A study conducted by Merial, the maker of heartworm pills for pets revealed that Seattle ranked 11th out of 15 with Houston being at the bottom of the pile. San Francisco, Los Angeles, and Chicago were the top three. For more information, visit King5.com and search under “Seattle gets bad marks for not scooping dog poop” dated May 5, 2006.



ASK DR. G.

Question: Am I in danger of catching worms from my dog?

Answer:

Yes, unless some easy precautions are taken! The potential of these infections is huge. Forty million households own 73 million dogs.

Unfortunately, public awareness of animal-to-human parasite infection is low. Over 80% of dog owners don't realize that the dog waste poses a human health threat. The Center for Disease Control reports that over 10,000 cases of roundworm infections occur annually. The main source of human infection with these parasites is environmental contamination with pet and wild animal feces.

One very interesting fact about these parasites is that the feces need to sit in the environment for more than a week for the parasites to be infective to humans. So, timely removal of dog and animal feces can be of great value.

The dog roundworm is the most common cause of animal-to-human parasite infection. The roundworm larvae migrate through, and persist in, different organs including the eye. This larva could also invade the nervous system. The hookworm is also another important human disease, which can be transmitted from dog feces. We need to remember that cats, raccoons and opossums could also be the carriers.

We should bear in mind that children and people with an immune-compromised system (AIDS, radiation and chemo patients, etc.) are at especially higher risk. When infected dog, cat, or wild animal waste is left on the ground, worms can remain viable in the soil for years! As a result, anyone contacting the soil (or sand) can also come in contact with the infected eggs. Since children are prone to putting their hands to their mouths, they are more susceptible to infection.

Though all this sounds unnerving, simple precautionary care is all that is needed. **The foremost issue is picking up after your dog and to educate your children to do the same.** Don't let someone else do it for you! Don't plan picnics in a dog-park. Do carry towlettes to wipe children's hands. There are multiple safe options for regular deworming against round and hookworms.

Ask your vet to formulate a plan for your dog, with once or twice a year fecal testing. Feed only cooked food. Cover sandboxes when not in use. Wash fruits and vegetables from your garden thoroughly before eating. Wash hands adequately. For additional questions contact: Goutam Mukherjee, DVM, MS, PhD, at the www.helpinghandsvet.com

BECOME A MEMBER

Our membership has grown to more than 55! Funds help subsidize supplies such as garbage bags, newsletters and printing, park clean-up, projects, and educational brochures and/or signage. In addition to providing financial support to O.L.A.E., members will receive a subscription to our quarterly newsletter which provides information on events, park clean-up parties, educational features, and more.

O.L.A.E.
P.O. Box 1562
Edmonds WA 98020 - 1562

Please check one: New Member Donation

Please print clearly:

Name: _____

Address: _____

City, State, Zip: _____

Evening Phone: _____

Email: _____

Dog(s) names: _____

Can we email you the newsletter: Yes

Contact me to help volunteer: Yes

Annual Membership

\$ 10 Individual

\$ 20 Family

\$ 50 Supporter

\$100 Barking Business Lounge (free advertising on O.L.A.E. website).

\$250 Yappie Club Level (free advertising on O.L.A.E. website and newsletter).

Remember to make check payable to O.L.A.E.

Thank you.

Current Yappie Club Sponsors:

Scrub-A-Pup: www.edmondsscrubapup.com

Helping Hands Vet Clinic: www.helpinghandsvet.com

B.B. Granda

Coco Beuchet of Hair Company on Greenwood at 84th